

Mikodam

YUKO

Description

Customizable acoustic accent chairs, offering design flexibility and comfort. Sophisticated, environmentally conscious, and sustainable.

This product presents clever solutions to complete your spaces. You can create the ideal Mikodam Accent Chair for your taste by selecting from seven different fabric alternatives for seat, backrest and headrest. YUKO offers different leg materials as well as swivel base options. The fabric used in Mikodam products is Camira Blazer, an environmentally conscious, high quality wool blend. Wool is a material that will keep you warm during cold seasons and cool during the warm seasons. YUKO has acoustic properties. The egg shape surrounds the user with the voices the armchair faces and leaves out the ones behind it. Through the collection and reflection of sounds, YUKO offers better conversations, a private space of your own and acoustically enhanced interiors.

Use

Residential, Commercial, Retail, Display Design, Cultural and Entertainment Spaces, Private/Public Spaces, Bars, Restaurants, Theaters, Hotels
Indoor use. Private and public spaces.

Characteristics

Acoustic, customizable, modern form, ergonomic, vibrant color options, swivel option

Dimensions

YUKO OA Width: 32.25" - 82cm | Height: 67.13" - 170.5cm | Depth: 30.7" - 78cm

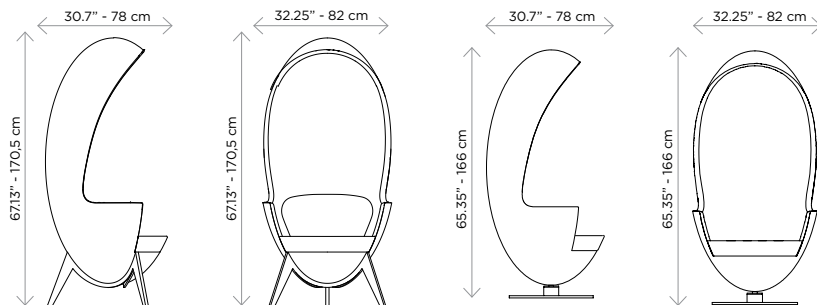
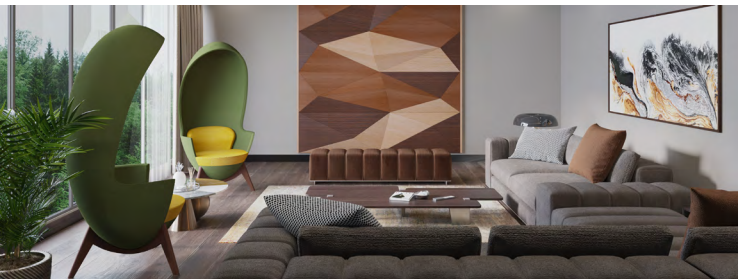
YUKO OF Width: 32.25" - 82cm | Height: 65.35" - 166cm | Depth: 30.7" - 78cm

Certification (Legs)

ISO 9001, 14001, 18001, Qualicoat, GSB, WRAS certified

Company

Mikodam Design



FURNITURE /ARMCHAIRS



YUKO OA



YUKO OF



Violet Fabric KLE



Brick Fabric KLC



Green Fabric KLD



Blue Fabric KLG



Yellow Fabric KLB



Anthracite Fabric KLF



Beige Fabric KLA



Oak Leg



Walnut Leg



Swivel Base

YUKO leg options

